

RESEARCH

Open Access

A modified liquid chromatography/tandem mass spectrometry method for predominant disaccharide units of urinary glycosaminoglycans in patients with mucopolysaccharidoses

Chih-Kuang Chuang^{1,4,5†}, Hsiang-Yu Lin^{1,2,6,7,8†}, Tuen-Jen Wang³, Chia-Chen Tsai¹, Hsuan-Liang Liu⁴ and Shuan-Pei Lin^{1,2,6,7,9*}

Abstract

Background: The identification of acid mucopolysaccharide by the liquid chromatography/tandem mass spectrometry method (LC-MS/MS) of the predominant disaccharide units of glycosaminoglycans (GAGs) (chondroitin sulfate, CS; dermatan sulfate, DS; heparan sulfate, HS) after methanolysis is validated and applicable for mucopolysaccharidosis (MPS) type determination.

Methods: A total of 76 urine samples were collected and analyzed, from nine MPS I patients, 13 MPS II patients, seven MPS III patients, eight MPS VI patients, and 39 normal controls. Urinary GAG was first precipitated by the Alcian blue method followed by a treatment of 3 N HCl methanol. The protonated species of the methylated disaccharide products were detected by using a multiple reaction monitoring experiment. Internal standards, [²H₆] CS, [²H₆] DS and [²H₆] HS, were prepared in-house by deuteriomethanolysis of CS, DS and HS.

Results: One particular disaccharide for each GAG was selected, in which the parent ion and its daughter ion after collision were m/z 426.1 → 236.2 for DS (m/z 432 → 239 for dimers derived from [²H₆] CS and [²H₆] DS) and m/z 384.2 → 161.9 for HS (m/z 390.4 → 162.5 for the [²H₆] HS dimer). The quantities of DS and HS were determined, which varied from one MPS type to the other. The results can be used to evaluate the severity of MPS subgroups, as well as urinary GAG amelioration at follow-up after enzyme replacement therapy (ERT).

Conclusions: The modified LC-MS/MS method for MPS type determination is specific, sensitive, validated, accurate, and applicable for simultaneous quantifications of urinary DS and HS. This method can help to make correct diagnosis of MPS patients and evaluate the effectiveness of ERT.

Keywords: Enzyme replacement therapy, Glycosaminoglycans, Liquid chromatography/tandem mass spectrometry, Methanolysis, Mucopolysaccharidosis

Introduction

The mucopolysaccharidoses (MPS), known as a group of lysosomal storage disorders, are caused by the deficiency of specific enzymes that catalyze the stepwise degradation of glycosaminoglycans (GAGs; mucopolysaccharides). There are at least 11 known enzymes involved in the

catabolism of dermatan sulfate (DS), heparan sulfate (HS), keratan sulfate (KS), chondroitin sulfate (CS), and hyaluronic acid (HA) [1-3]. Any enzyme deficiency will block the GAG degradation, which results in GAG macromolecules with a specific carbohydrate or sulfated carbohydrate residue accumulating in cells, causing severe dysfunction [1-4]. The clinical manifestations of MPS are chronic and progressive. The severity and prognosis vary from one type to another with a wide spectrum of clinical severity. MPS patients present with many distinct clinical features, including organomegaly, developmental delay, dysmorphic

* Correspondence: zsplin14@gmail.com

†Equal contributors

¹Division of Genetics and Metabolism, Department of Medical Research, Mackay Memorial Hospital, Taipei, Taiwan

²Department of Pediatrics, Mackay Memorial Hospital, Taipei, Taiwan

Full list of author information is available at the end of the article

facial features, skeletal dysplasia (dysostosis multiplex), and growth retardation. In addition, hearing [5], vision (mostly with corneal clouding), pulmonary and cardiovascular function [6,7], bone mineral density [8], and joint mobility are also affected. The MPS clinical features may present from birth to late childhood or even in early adulthood, depending on the severity of the MPS type. Death from respiratory or cardiac failure and respiratory infections usually occurs before the age of 10 years in severe phenotypes [1-4,9].

An accurate diagnosis is achieved generally by three sequential tests: the quantification of urinary GAG, two-dimensional electrophoresis (2-D EP) qualitative analysis, and leukocyte enzyme activity assay [10-12]. Urinary GAG quantitative analysis can provide a screen for MPS diagnosis, but cannot be used to identify a specific MPS disease. A 2-D EP is the most common and feasible method used for specific MPS disease. Nevertheless, this method is time-consuming and requires more than two days to complete a test. Moreover, the interpretation is difficult and subjective, which can make the diagnosis unreliable. Particularly, the interpretation of the 2-D EP pattern is ambiguous due to the affected GAGs being similar in MPS I, II, and VI. Based on the limitations of MPS first-line screening methods, the establishment of an advanced liquid chromatography/tandem mass spectrometry method (LC-MS/MS) for MPS subgroup determination is valuable and important.

The polysaccharide chains are elongated by the sequential addition of alternating acidic and amino sugars, donated by their UDP-derivatives. Amino sugars are essential components of GAGs, glycoproteins, and glycolipids. Members of the GAG family vary in the type of hexosamine, hexose or hexuronic acid unit they contain (e.g. glucuronic acid, iduronic acid, galactose, galactosamine, glucosamine) [13]. The specific GAGs of physiological significance are DS, CS, HS, KS, and HA. Although each of these GAGs has a predominant disaccharide component, heterogeneity does exist in the sugars presented in the make-up of any given class of GAG. In this study, the identification of acid MPS by the modified LC-MS/MS method of the predominant disaccharide component of GAGs after methanolysis [14-18] is proposed and validated for MPS type determination [19,20].

Materials and methods

The LC-MS/MS method for GAG disaccharide analysis was modified according to the literature reported by Auray-Blais et al. [19]. For GAG disaccharide LC-MS/MS analysis, a multiple reaction monitoring (MRM) experiment giving a precursor molecular ion (Q1) and a respective fragment ion (Q3) was normally applied. The instrument was operated in a positive-ion ($[M + H]^+$) mode. The

quadrupoles, Q1 and Q3, were tuned with unit resolution, and the MS conditions were optimized for maximum signal intensity. The LC-MS/MS analysis was performed on a 4000 QTRAP LC-MS/MS system (AB Sciex, Foster City, CA, USA) equipped with a TurboIonSpray (electrospray ionization; ESI), and Agilent 1260 Infinity HPLC pump and autosampler (Agilent Technologies, Santa Clara, CA, USA). The experimental parameters were set and are clearly described in the following section. Data were acquired and processed using Analyst 1.5.2™ software (AB Sciex). Calibrations of GAG standards and internal standards were performed with every batch of samples.

MPS patient details and normal control

A total of 76 urine samples were collected and analyzed from nine MPS I patients, 13 MPS II patients, seven MPS III patients, eight MPS VI patients, and 39 normal controls. MPS I phenotypes comprised five MPS I-Hurler/Scheie (H/S) and four MPS I-S patients according to their progressive central nervous system and the severity of somatic manifestations. They have received enzyme replace therapy (ERT) in a varied duration, from one month to 8.8 years, and the ages of ERT initiation were from 0.7 to 34.9 years old. In those, two patients expired due to respiratory infection and complications. For MPS II phenotypes, eight severe and five mild forms were inclusive in this study. All 13 patients have received ERT and the duration of receiving ERT was from 1.3 to 7.3 years. The ages of ERT initiation were varied, from 4.5 to 18.3 years old. The seven MPS III patients were identified as one IIIA, three IIIB, and three IIIC and all patients were confirmed by leukocyte enzymatic assays. No MPS VI phenotypes were further classified. Soft tissue and skeletal disease presented in MPS VI patients, but without central nervous system (CNS) involvement. These patients have received ERT from 3 to 10.3 years, and the ages of ERT initiation were from 4.4 to 21.2 years old. Normal controls (n = 39) were chosen from out-patient department, and informed consent was obtained from all normal population and MPS patients. The study was approved by the ethics committee of Mackay Memorial Hospital, Taipei, Taiwan.

GAG precipitation and methanolysis

Urine samples (approximate 10 mL) were collected in a sterile urine container (polyethylene; Nalge Nunc International, USA). The method of GAG precipitation was described previously [10-12]. GAGs were first precipitated from urine using the Alcian blue (AB) reagent containing sodium acetate. Then, sodium chloride and methanol were used to dissolve MPS-AB complex. Sequentially, sodium carbonate was added to dissociate the MPS complex and AB. Finally, ethanol was used to reprecipitate MPS. After evaporated to dryness, the precipitate was

dissolved in water based on dimethylmethylene blue value in mg/L, and the supernatant was subjected to methanolysis based on the method reported by Chambers RE et al. [21]. The GAGs were then degraded to uronic acid-*N*-acetylhexosamine dimers [10-12].

Calibration and sample preparations

Calibrators including CS, DS, and HS were purchased from Sigma Co. (Saint Louis, MO, USA). The stock solution of individual standard was prepared in a concentration of 1 mg/mL. The calibration curve was made by adding five different volumes for each GAG standard, and the final concentrations of five mixed working standards were 12.5, 25, 50, 100, and 200 µg/mL for DS; 6.25, 12.5, 25, 50, and 100 µg/mL for CS; 3.125, 6.25, 12.5, 25, and 50 µg/mL for HS, respectively. The five prepared GAG working standard mixtures (70 µL) and the precipitated GAG sample (2 µL) were added into tubes separately, and then, all the tubes were dried by nitrogen gas using the following methanolysis processes. The methanolysis was performed by adding 3 N HCl in methanol (200 µL) and 2, 2-dimethoxypropane (10 µL). After drying under nitrogen, acetonitrile (100 µL) and a mixture of GAG internal standards (100 µL) were added, and dried again. Reconstitution of the standards and samples was performed with 100 µL ammonium acetate (NH₄OAc; 10 mM). The reconstituted fluids were filtrated and centrifuged by using a 3 kDa Amicon filter in 12,000 rpm for 30 minutes. After this, the filtrates were ready for LC-MS/MS analysis.

Internal standard preparations

The internal standards including [²H₆] DS, [²H₆] CS, and [²H₆] HS, were derived in-house from deuterio-methanolysis of GAG standards comprising DS, CS, and HS, according to the method reported by Zhang et al. [20]. The formation of ²HCl in C²H₃O²H (2 mol/L) was first performed by adding a drop of acetyl chloride (CH₃COCl) into deutrioacetate (C²H₃O²H) on ice. The stock solution of individual GAG standard (300 µL) was added into a tube separately, and dried by nitrogen for 15 minutes. After drying, ²HCl in C²H₃O²H (300 µL) was added and incubated in 65°C for 75 minutes. After being dried by nitrogen for about five minutes, deionized water (2 mL) was added and stored in ice (-20°C). A mixture of GAG internal standards with the same volumes of [²H₆] DS, [²H₆] CS, and [²H₆] HS was ready for LC-MS/MS analysis. The GAG internal standard mixture was stable in 4°C for seven days.

Experimental parameters of LC-MS/MS analysis

The LC-MS/MS analysis was performed on a 4000 QTRAP triple-quadrupole MS system equipped with a TurboIonSpray, and Agilent 1260 Infinity HPLC pump

and autosampler. The 3-µm Atlantis dC18 column (3.0 × 50 mm) was purchased from Waters Corporation (Milford, MA, USA). The mobile phase A consisted of 5 mM NH₄OAc (pH 5.5) in deionized water containing 0.1% formic acid and the mobile phase B consisted of 5 mM NH₄OAc (pH 5.5) in 100% methanol, delivered in a gradient elution starting at 100% water and ending at 100% water at a flow rate of 450 µL/min. The injection volume was 5 µL, and the total run time was 6.5 minutes. The instrument was operated in the positive-ion mode. The experimental parameters were set as followed: curtain gas at 10 psi, CAD set at medium, IonSpray voltage at 5500 V, temperature at 450°C, Gas 1 at 50 psi, and Gas 2 at 60 psi. Nitrogen was used for the curtain gas, Gas 1, Gas 2, and collision gas. Data were acquired and processed using Analyst 1.5.2™ software (AB Sciex).

The calibration curve was made by plotting the standards with six concentrations including 0 µg/mL (X-axis) and their integrated areas (Y-axis) after MS/MS measurements. The linear range was set from 12.5 to 200 µg/mL for DS; 6.25 to 100 µg/mL for CS; and 3.125 to 50 µg/mL for HS. The “linear through zero” regression was excellent ($y = 9.35e + 0.004x$; $r = 0.9994$). The within-run and between-run precisions of the assay were determined by assay of three samples in triplicate over a period of three days. In this study, the triplicate results in low (10 µg/mL for DS; 2.5 µg/mL for HS), medium (50 µg/mL for DS; 20 µg/mL for HS), and high levels (150 µg/mL for DS; 40 µg/mL for HS) from three runs were used to estimate within-run and between-run precisions.

Results

Transition mass-to-charge ratio (*m/z*) of GAG standards and internal standards

One particular disaccharide for each GAG was selected, in which the parent ion and its daughter ion after collision were *m/z* 426.1 → 236.2 for DS (retention time = 3.30 ± 0.06 minutes) and CS (retention time = 3.75 ± 0.11 minutes), and *m/z* 384.2 → 161.9 for HS (retention time = 3.43 ± 0.09 minutes). The mass spectrum of the deuterio-methanolysis product of DS showed the incorporation of +6 atoms of deuterium, the same as that of HS. The protonated molecular ion was the transition *m/z* 432 → 239 for [²H₆] CS and [²H₆] DS dimers (retention time = 3.71 ± 0.09 minutes and 3.26 ± 0.05 minutes, respectively), as well as the molecular ion transition *m/z* 390.2 → 168 for the [²H₆] HS dimer (retention time = 3.39 ± 0.06 minutes). Quantifications were achieved using peak areas that were processed using Analyst 1.5.2™ software (AB Sciex).

Precision and recovery analyses of the tandem mass spectrometry assay

The within-run and between-run precisions were determined by an assay of total 18 samples in low, medium, and high concentrations of DS and HS using the method described earlier. All 18 samples were run in triplicate for within-run analysis, and a duplicate analysis of each sample ($n = 18$) was performed on three different days sequentially. The average within-run and between-run CV was 9.7% (low conc.), 6.4% (medium conc.), and 5.9% (high conc.), as well as 11.8%, 7.6%, and 9.3%, respectively. The analytical recovery was also investigated by spiked standards with known concentrations of DS and HS (20 $\mu\text{g}/\text{mL}$ for each standard) into pooled normal urine samples as in the precision studies. The recoveries of this LC-MS/MS assay were 94.3% for DS (ranging from 91.9% to 97.6%), and 95.1% for HS (ranging from 92.3% to 98.4%). The linearity study of this method was carried out with concentrations ranging from 12.5 to 200 $\mu\text{g}/\text{mL}$ for DS, and 3.125 to 50 $\mu\text{g}/\text{mL}$ for HS. Each concentration was performed in triplicate. Linearity of DS and HS was calculated individually and the correlation coefficients (r) were 0.9914 for DS and 0.9935 for HS, respectively.

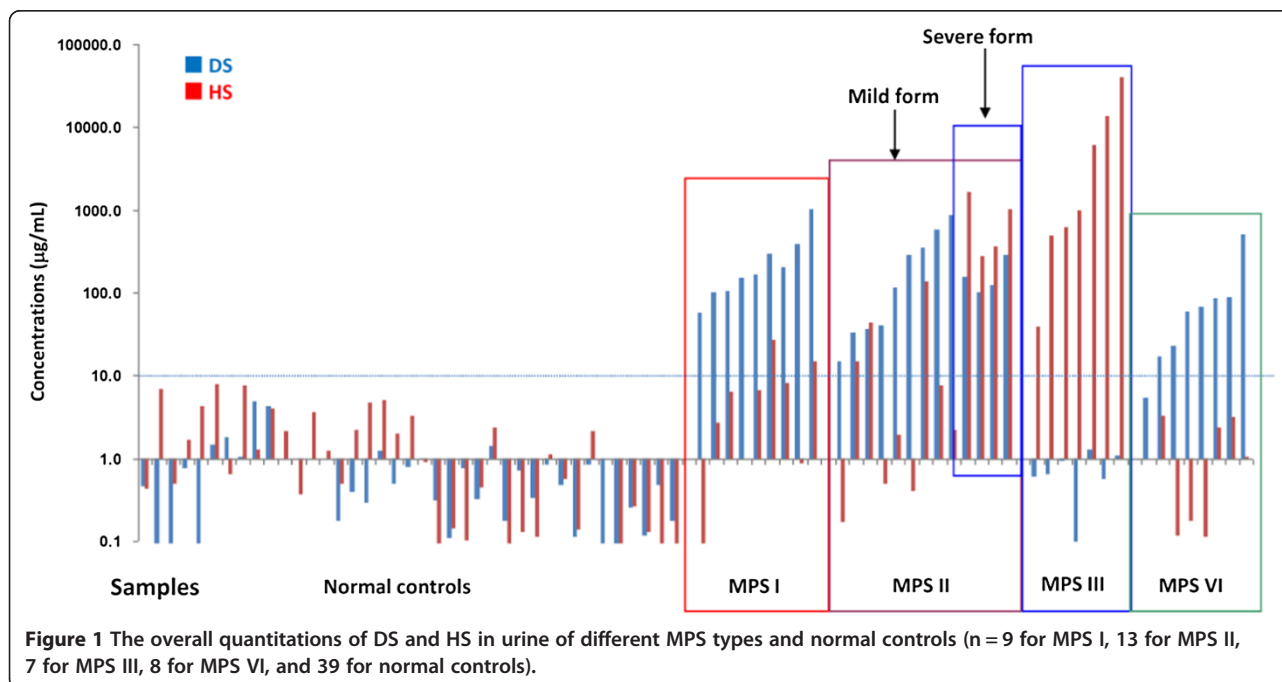
Overall distributions of DS and HS in MPS patients and normal controls

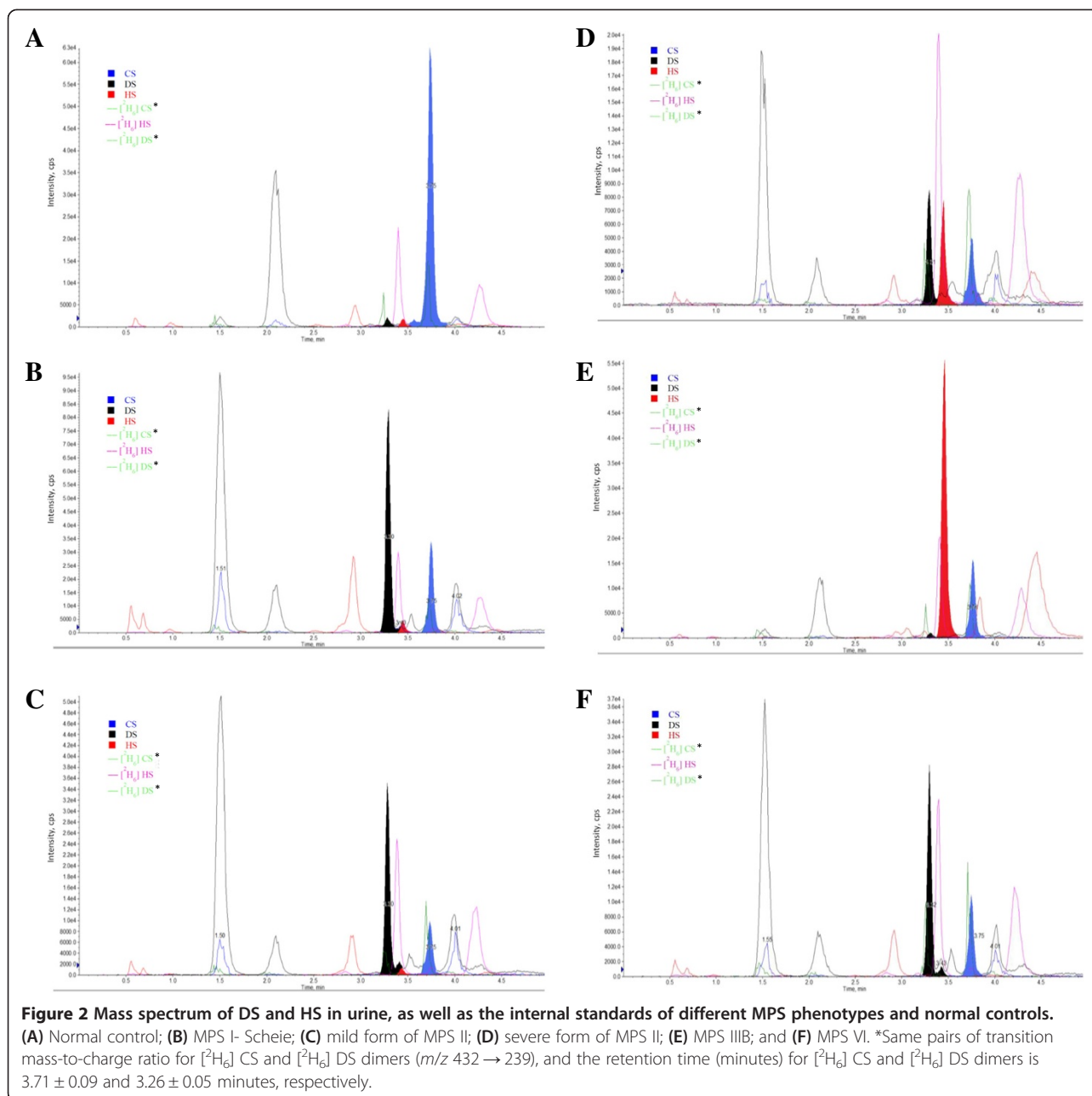
In this study, a total of 76 urine samples were collected and analyzed. As shown in Figure 1, normal samples could be easily distinguished from MPS patients based on the cut-off point (about 10 $\mu\text{g}/\text{mL}$) determined from

overall urinary DS and HS measurements. In the control group, the only GAG that could be identified in urine was CS; there was no or very little DS and HS. In the MPS I and II patients, there was primarily an accumulation of both DS and HS, resulting in enhanced excretion in urine. In the MPS III patients, the affected GAG was HS, and in the MPS VI patients, the affected GAG was primarily DS.

The mass spectrum of different MPS types and normal controls

The mass spectrums of the normal control and each MPS type are illustrated in Figure 2 (A-F). The major urinary GAG found in normal control was CS, and with very small amounts of DS and HS, but not significant (Figure 2A). The only predominant similarity of affected GAGs among MPS I, II, and VI patients was DS; HS was found particularly in MPS I and II patients. The results showed a significant elevation of DS excreted in the urine of MPS I, II, and VI patients; levels of HS varied among them. Elevated excretion of HS was observed most significantly in the severe form of MPS II, and then, in the mild forms of MPS II, MPS I and MPS VI patients in decreasing order of elevations. The quantity of urinary HS in MPS VI patients was very little amount, and almost equivalent to that of the normal value. For those with MPS III, HS was the principal GAG that was grossly accumulated and excreted in urine, and showed a distinct HS mass spectrum diagram (Figure 2B-F).





The concentrations of urinary DS and HS in different MPS types and normal controls

The average concentrations (in $\mu\text{g/mL}$) of urinary DS and HS found in different MPS types and the normal controls were determined. The majority of urinary GAG found in normal control was CS ($71.9 \pm 46.6 \mu\text{g/mL}$) with very little DS and HS (less than 1.68 ± 1.01 and $3.88 \pm 2.16 \mu\text{g/mL}$, respectively). In MPS I patients, DS and HS were simultaneously detected and were shown to be significantly elevated when comparing with normal control ($p < 0.005$ for DS; $p < 0.001$ for HS), and the concentrations were 276.9 ± 301.0 and $7.3 \pm 8.7 \mu\text{g/mL}$,

respectively. When comparing the quantities of DS and HS in MPS I and II patients, the urinary HS in the severe form of MPS II was significantly greater than that of MPS I and the mild form of MPS II (824.0 vs. 7.3 and $22.9 \mu\text{g/mL}$; $p < 0.01$), and the DS was slightly lower than that found in MPS I and the mild form of MPS II patients (164.6 vs. 276.9 and $258.6 \mu\text{g/mL}$; $p < 0.05$) (Figures 3A and B). HS was predominant in the urine of MPS III patients, with an approximate average amount of $8901.4 \mu\text{g/mL}$, which was thousands of times higher than the amounts seen in the normal control group. The differences were all significant when comparing

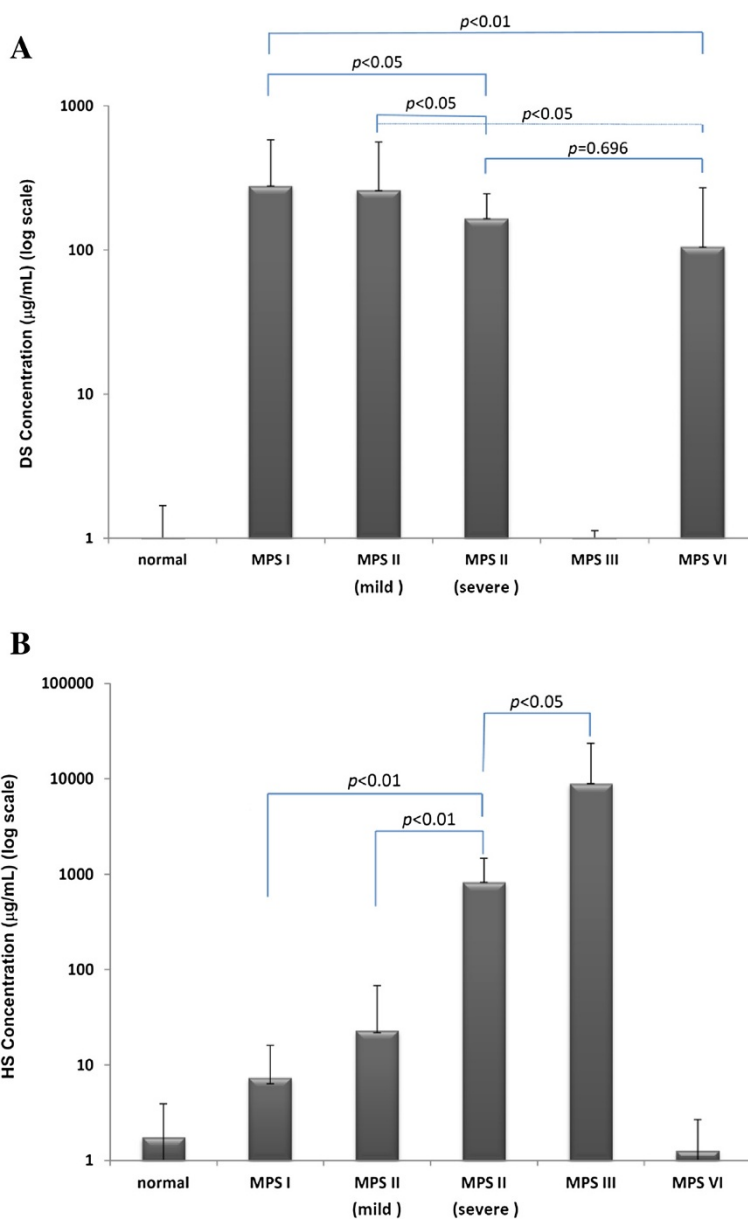


Figure 3 The comparison of affected GAGs showed significant differences among different MPS types (n = 9 for MPS I; n = 5 for mild form of MPS II, and n = 8 for severe form of MPS II; n = 7 for MPS III; and n = 8 for MPS VI), and normal control (presented in log scale). Urinary DS (A) and HS (B) concentrations in average (µg/mL) detected in different MPS types and normal controls.

within the different MPS types ($p < 0.01$). A very small amount of DS ($0.73 \mu\text{g/mL}$) was found in MPS III patients. The predominantly affected GAG in MPS VI patients was DS, which was seen to be moderately elevated, approximately $105.5 \mu\text{g/mL}$ on average, and a relatively little amount of HS ($1.26 \mu\text{g/mL}$) was observed. No significant difference was found when comparing DS values between the severe form of MPS II and MPS VI. This was a reliable indicator to discriminate MPS VI from MPS I and II ($p < 0.01$ and $p < 0.05$). The quantifications

of DS and HS in different MPS types are compared and shown in Figures 3A and B (log scale).

Evaluation of the effectiveness of enzyme replacement therapy (ERT) in MPS patients

To evaluate the amelioration of MPS patients receiving ERT, the reduction of urinary GAG (DMB/creatinine ratio) and particular disaccharide units of the affected GAGs were measured for three successive years. The average reductions of urinary GAGs after ERT in MPS I

(n = 9), II (n = 13), and VI (n = 9) patients were significant. In the first year, the reductions were 62.0%, 71.5%, and 61.9%, respectively. In the second year, they were 72.5%,

85.5% and 77.9%. In the third year, they were 71.9%, 88.1% and 87.6% (See Figure 4A). For MPS I-S and the mild form of MPS II patients, the reductions of DS and HS

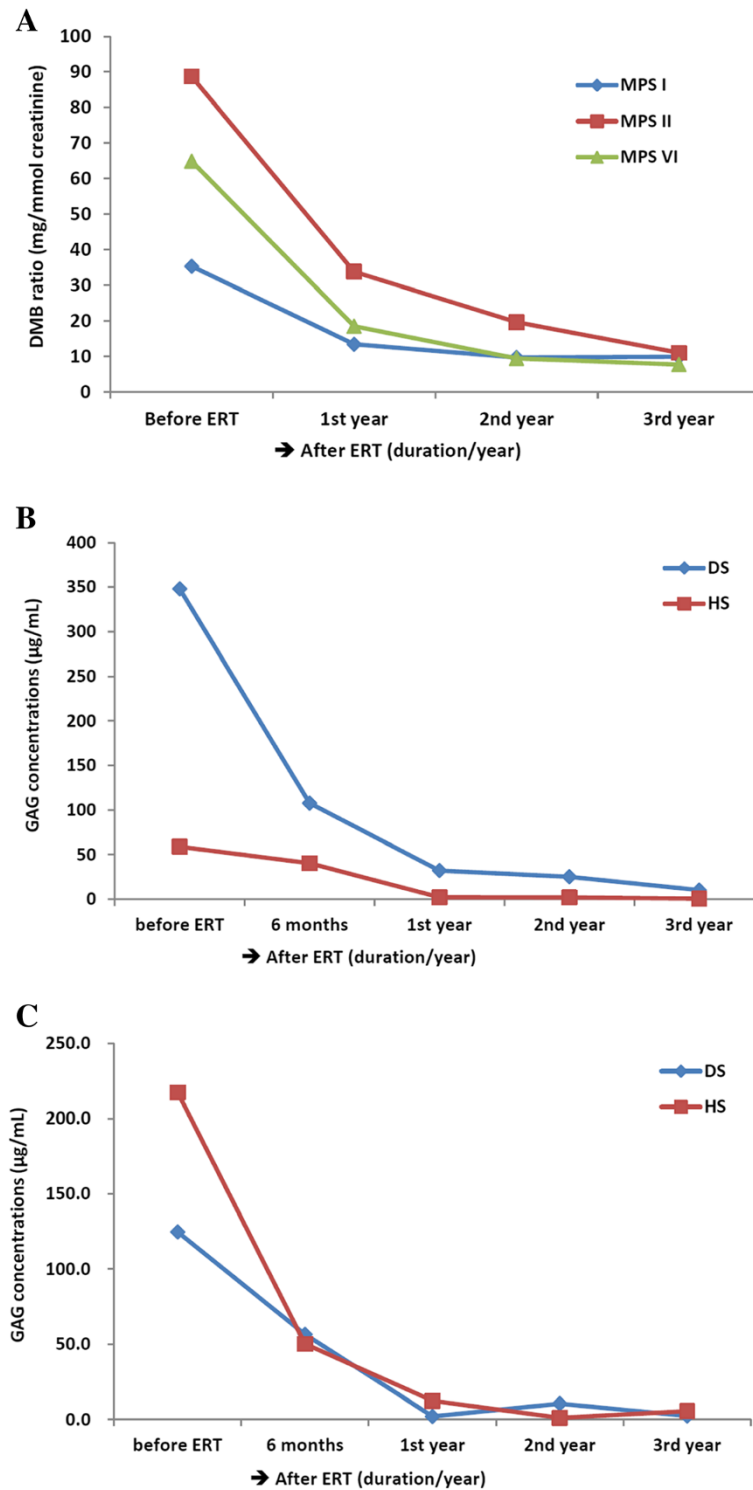


Figure 4 Evaluations of the effectiveness of ERT in MPS patients. The reduction of urinary GAGs after ERT in MPS I, II, and VI patients was significant (A); the reduction of DS and HS in patients with MPS I-Scheie (B), and the mild form of MPS II (C) patients after ERT was notable.

were also prominent. Respectively, they were 69.1% and 54.7%, as well as 31.5% and 76.9% in the first six months; 90.8% and 98.4%, as well as 96.4% and 94.3% in the first year; and a greater than 97.1% reduction for both in the second and the third years (Figures 4B and C).

Discussion

The aim of this research project is to develop a LC-MS/MS method for MPS type determination instead of the conventional 2-D EP method. The data showed that the LC-MS/MS method was highly specific and highly sensitive to discriminate well among DS, HS, and CS, even with a trace of GAG content in the urine sample. It is encouraging to see that the results of this study are successful and can be used to distinguish one MPS type from the others.

Two main merits of our method that differ from the method reported by Auray-Blais et al. are sample itself and the addition of internal standards. According to the method previously reported by Auray-Blais et al., a small amount of the urine sample is directly methanolized without undertaking GAG precipitation. By doing it this way, a black sticky analyte is formed, which cannot be successfully introduced into LC-MS/MS for further analysis as it obstructs the HPLC flow and column. By performing the GAG precipitation, the feasibility of CS, DS, or HS detections in the urine sample could be significantly enhanced. Without a doubt, the addition of stable-radioisotope internal standards (IS) is another merit of our method modification. Combined with the addition of internal standards, the eluted positions of CS, DS, or HS can be precisely identified. In addition, the relative concentrations of CS, DS, and HS in the urine sample can be obtained by integrating the peak areas between the individual GAG and that of internal standard with known concentration. The internal standard can also be used as a quality assurance in LC-MS/MS analysis.

Based on the results detected by LC-MS/MS method, the quantities of affected GAGs are distinctive for MPS type determinations. The results are fully matched with those examined by 2-D EP method, and correspond well with the leukocyte enzymatic assay. The LC-MS/MS method used for MPS type determination has many advantages, including high sensitivity, high specificity, high throughput, high reliability, and analytic automation. The highly sensitive of LC-MS/MS method was achieved and the lower limit of quantitation (LLOQ) was less than 0.06 μg and 0.065 μg with 100 μL urine for DS and HS, respectively. The high specificity of MRM detection allowed specific detection of DS and HS, in which the parent ion and its daughter ion after collision were m/z 426.1 \rightarrow 236.2 for DS and m/z 384.2 \rightarrow 161.9 for HS.

The LC-MS/MS method can also be used for MPS subgroup classifications, particularly for MPS II. In this application, the concentration of HS is the key factor

used to distinguish the mild form of MPS II from the severe form. The results obtained in this study showed that the concentrations of HS detected from the samples of the severe form MPS II patients were significantly higher than those of the mild form MPS II patients. The increase was over 35 times greater (824.0 vs. 22.9 $\mu\text{g}/\text{mL}$). The results also showed that the concentrations of DS were varied among MPS I, MPS II, and MPS VI. The quantities of DS detected from MPS VI patients was significantly lower than those with MPS I and the mild form MPS II patients; but was equivalent to those of severe form MPS II patients. As very little or no HS was seen in the samples from MPS VI patients, and this can be used as a marker.

Disease-specific treatments to replace specific enzyme activity include ERT for the non-neurologic manifestations of MPS patients [22-31], and bone marrow as well as hematopoietic stem cell transplantations for MPS I, II, IV, and VI patients [32,33]. de Ru et al. reported that ERT can result in good clearance of GAGs from many tissues and can significantly ameliorate several symptoms [29]. The effectiveness of ERT for patients with MPS I, II, and VI is significant. In general, the improvement of symptoms or physiological activities is one major indicator used to evaluate the effectiveness of ERT, as is, the clearance of GAGs from urine. Notably, the DMB ratio significantly ameliorated and declined to 55% to 65% of the original value when MPS patients had received ERT for more than three to six months. The DMB ratio can give useful information to evaluate the effectiveness of ERT; however, it cannot show which GAG can be degraded well after ERT. HS is mainly found in the central nervous system and it accumulates in the brain if it cannot be broken down due deficient or missing enzymes. By using the LC-MS/MS method, this study showed that the concentrations of both DS and HS are reduced significantly when comparing the predominant disaccharide units in MPS I and II patients before and after ERT. The results demonstrate that the reductions of DS and HS after ERT are substantial, and the value of predominate disaccharide unit detections by using LC-MS/MS method is suitable for routine purposes and useful in evaluating the MPS progressive conditions.

Conclusions

The LC-MS/MS method used for MPS type determination is specific, sensitive, validated, reproducible, accurate and applicable for simultaneous quantification of urinary DS and HS. By using this method, MPS can be properly diagnosed. As well, this method can be used to evaluate the effectiveness of follow-up therapy.

Competing interests

The authors declare that they have no competing interests.

Authors' contributions

CKC and HYL participated in method design of the study, statistical analysis, interpretation of data, and drafting of the manuscript. SPL performed acquisition and interpretation of the data, as well as helped to revise the manuscript. TJW and CCT performed biochemical and tandem mass analyses. HLL was our consultant for LC-MS/MS method development, and also revised the manuscript. All authors read and accepted the manuscript.

Acknowledgement

We would like to express our sincere thanks to the staffs of Clinical Laboratory and Pediatric Departments of Mackay Memorial Hospital for the sample collection. This study was supported by the research grants from the National Science Council, Taiwan (NSC-102-2314-B-195-006 and NSC-102-2314-B-195-017-MY3), Mackay Memorial Hospital (MMH-I-S-600 and MMH-10352), and research funding from Genzyme, SANOFI.

Author details

¹Division of Genetics and Metabolism, Department of Medical Research, Mackay Memorial Hospital, Taipei, Taiwan. ²Department of Pediatrics, Mackay Memorial Hospital, Taipei, Taiwan. ³Department of Laboratory Medicine, Mackay Memorial Hospital, Taipei, Taiwan. ⁴Institute of Biotechnology, National Taipei University of Technology, Taipei, Taiwan. ⁵College of Medicine, Fu-Jen Catholic University, Taipei, Taiwan. ⁶Department of Early Childhood Care and Education, Mackay Junior College of Medicine, Nursing and Management, Taipei, Taiwan. ⁷Department of Medicine, Mackay Medical College, New Taipei City, Taiwan. ⁸Institute of Clinical Medicine, National Yang-Ming University, Taipei, Taiwan. ⁹Department of Infant and Child Care, National Taipei University of Nursing and Health Sciences, Taipei, Taiwan.

Received: 12 April 2014 Accepted: 18 August 2014

Published: 2 September 2014

References

1. Neufeld EF, Muenzer J: **The mucopolysaccharidoses.** In *The Metabolic and Molecular Bases of Inherited Disease*. 8th edition. Edited by Scriver CR, Beaudet AL, Valle D. New York: McGraw-Hill Book Company; 2001:3421–3452.
2. Clarke LA: **Clinical diagnosis of lysosomal storage diseases.** In *Organelle Diseases. Clinical Features, Diagnosis, Pathogenesis and Management*. Edited by Applegarth DA, Dimmick JE, Hall JG. London: Chapman and Hall Medical; 1997:45–97.
3. Besley GTN, Wraith JE: **Lysosomal disorders.** *Curr Paediatr* 1997, **7**:128–134.
4. Wraith JE: **Mucopolysaccharidoses.** *Curr Paediatr* 1996, **6**:74–79.
5. Lin HY, Shih SC, Chuang CK, Lee K, Chen M, Lin HC, Chiu PC, Niu DM, Lin SP: **Assessment of hearing loss by pure-tone audiometry in patients with mucopolysaccharidoses.** *Mol Genet Metab* 2014, **111**:533–538.
6. Lin SP, Shih SC, Chuang CK, Lee KS, Chen MR, Niu DM, Chiu PC, Lin SJ, Lin HY: **Characterization of pulmonary function impairments in patients with mucopolysaccharidoses—changes with age and treatment.** *Pediatr Pulmonol* 2014, **49**:277–284.
7. Lin SM, Lin HY, Chuang CK, Lin SP, Chen MR: **Cardiovascular abnormalities in Taiwanese patients with mucopolysaccharidosis.** *Mol Genet Metab* 2014, **111**:493–498.
8. Lin HY, Shih SC, Chuang CK, Chen MR, Niu DM, Lin SP: **Assessment of bone mineral density by dual energy x-ray absorptiometry in patients with mucopolysaccharidoses.** *Orphanet J Rare Dis* 2013, **8**:71.
9. Lin HY, Chuang CK, Chen MR, Chiu PC, Ke YY, Niu DM, Tsai FJ, Hwu WL, Lin JL, Lin SP: **Natural history and clinical assessment of Taiwanese patients with mucopolysaccharidosis IVA.** *Orphanet J Rare Dis* 2014, **9**:21.
10. Chuang CK, Lin SP, Chung SF: **Diagnostic screening for mucopolysaccharidoses by the dimethylmethylene blue method and two dimensional electrophoresis.** *Chin Med J (Taipei)* 2001, **64**:15–22.
11. Hopwood JJ, Harrison JR: **High-resolution electrophoresis of urinary glycosaminoglycans: an improved screening test for the mucopolysaccharidoses.** *Anal Biochem* 1982, **119**:120–127.
12. Dembure PP, Roesel RA: **Screening for mucopolysaccharidoses by analysis of urinary glycosaminoglycans.** In *Techniques in Diagnostic Human Biochemical Genetics - A Laboratory Manual*. Edited by Hommes FA. 1991:77–86.
13. Champe PC, Harvey RA: *Glycosaminoglycans in Biochemistry: Lippincott's Illustrated Reviews, 2nd edition.* Philadelphia: J.B. Lippincott Company; 1994.
14. O'Brien JF, Gerritsen T, Helmut AC: **Identification of acid mucopolysaccharides by gas chromatographic analysis of component sugars after chemical depolymerization.** *Anal Biochem* 1973, **56**:465–479.
15. Lehrfeld J: **Differential gas-liquid chromatography method for determination of uronic acids in carbohydrate mixtures.** *Anal Biochem* 1981, **115**:410–418.
16. Dierckxens GC, Meyer LD, Tonino GJ: **Simultaneous determination of uronic acids, hexosamines, and galactose of glycosaminoglycans by gas-liquid chromatography.** *Anal Biochem* 1983, **130**:120–127.
17. Chaplin MF: **A rapid and sensitive method for the analysis of carbohydrate components in glycoproteins using gas-liquid chromatography.** *Anal Biochem* 1982, **123**:336–341.
18. Vadas L, Prihar HS, Pugashetti BK, Feingold DS: **A gas chromatography method for the quantitative determination of hexuronic acids in alginic acid.** *Anal Biochem* 1981, **114**:294–298.
19. Auray-Blais C, Bherer P, Gagnon R, Young SP, Zhang HH, An Y, Clarke JT, Millington DS: **Efficient analysis of urinary glycosaminoglycans by LC-MS/MS in mucopolysaccharidoses type I, II and VI.** *Mol Genet Metab* 2011, **102**:49–56.
20. Zhang H, Young SP, Auray-Blais C, Orchard PJ, Tolar J, Millington DS: **Analysis of glycosaminoglycans in cerebrospinal fluid from patients with mucopolysaccharidoses by isotope-dilution ultra-performance liquid chromatography–tandem mass spectrometry.** *Clin Chem* 2011, **57**:1005–1012.
21. Chambers RE, Clamp JR: **An assessment of methanolysis and other factors used in the analysis of carbohydrate-containing materials.** *Biochem J* 1971, **125**(4):1009–1018.
22. Wraith JE, Clarke LA, Beck M, Kolodny EH, Pastores GM, Muenzer J, Rapoport DM, Berger KI, Swiedler SJ, Kakkis ED, Braakman T, Chadbourne E, Walton-Bowen K, Cox GF: **Enzyme replacement therapy for mucopolysaccharidosis I: A randomized, double-blinded, placebo-controlled, multinational study of recombinant human α -L-iduronidase (aronidase).** *J Pediatr* 2004, **144**:581–588.
23. Wraith JE: **The first 5 years of clinical experience with laronidase enzyme replacement therapy for mucopolysaccharidosis I.** *Expert Opin Pharmacother* 2005, **6**:489–506.
24. Lin HY, Lin SP, Chuang CK, Chen MR, Wraith JE: **Mucopolysaccharidosis I under enzyme replacement therapy with laronidase—A mortality case with autopsy report.** *J Inher Metab Dis* 2005, **28**:1146–1148.
25. Wraith JE, Beck M, Lane R, van der Ploeg A, Shapiro E, Xue Y, Kakkis ED, Guffon N: **Enzyme replacement therapy in patients who have mucopolysaccharidosis I and are younger than 5 years: Results of a multinational study of recombinant human α -L-iduronidase (aronidase).** *Pediatrics* 2007, **120**:37–46.
26. Clarke LA, Wraith JE, Beck M, Kolodny EH, Pastores GM, Muenzer J, Rapoport DM, Berger KI, Sidman M, Kakkis ED, Cox GF: **Long-term efficacy and safety of laronidase in the treatment of mucopolysaccharidosis I.** *Pediatrics* 2009, **123**:229–240.
27. Cho SY, Huh R, Chang MS, Lee J, Kwun Y, Maeng SH, Kim SJ, Sohn YB, Park SW, Kwon EK, Han SJ, Jung J, Jin DK: **Impact of enzyme replacement therapy on linear growth in Korean patients with Mucopolysaccharidosis Type II (Hunter Syndrome).** *J Korean Med Sci* 2014, **29**:254–260.
28. Higuchi T, Shimizu H, Fukuda T, Kawagoe S, Matsumoto J, Shimada Y, Kobayashi H, Ida H, Ohashi T, Morimoto H, Hirato T, Nishino K, Eto Y: **Enzyme replacement therapy (ERT) procedure for mucopolysaccharidosis type II (MPS II) by intraventricular administration (IVA) in murine MPS II.** *Mol Genet Metab* 2012, **107**(1–2):122–128.
29. de Ru MH, van der Tol L, van Vlies N, Bigger BW, Hollak CE, Ijlst L, Kulik W, van Lenthe H, Saif MA, Wagemans T, van der Wal WM, Wanders RJ, Wijburg FA: **Plasma and urinary levels of dermatan sulfate and heparin sulfate derived disaccharides after long-term enzyme replacement therapy (ERT) in MPS I: correlation with the timing of ERT and with total urinary excretion of glycosaminoglycans.** *J Inher Metab Dis* 2013, **36**:247–255.
30. Brands MM, Frohn-Mulder IM, Hagemans ML, Hop WC, Oussoren E, Helbing WA, van der Ploeg AT: **Mucopolysaccharidosis: Cardiologic features and effects of enzyme-replacement therapy in 24 children with MPS I, II and VI.** *J Inher Metab Dis* 2013, **36**:227–234.
31. Lin HY, Chen MR, Chuang CK, Chen CP, Lin DS, Chien YH, Ke YY, Tsai FJ, Pan HP, Lin SJ, Hwu WL, Niu DM, Lee NC, Lin SP: **Enzyme replacement therapy for mucopolysaccharidosis VI—experience in Taiwan.** *J Inher Metab Dis* 2010, **33**(Suppl 3):S421–S427.

32. Peters C, Balthazor M, Shapiro EG, King RJ, Kollman C, Hegland JD, Henslee-Downey J, Trigg ME, Cowan MJ, Sanders J, Bunin N, Weinstein H, Lenarsky C, Falk P, Harris R, Bowen T, Williams TE, Grayson GH, Warkentin P, Sender L, Cool VA, Crittenden M, Packman S, Kaplan P, Lockman LA, Anderson J, Krivit W, Dusenbery K, Wagner J: **Outcome of unrelated donor bone marrow transplantation in 40 children with Hurler syndrome.** *Blood* 1996, **87**:4894–4902.
33. Muenzer J, Wraith JE, Clarke LA: **International consensus panel on management and treatment of Mucopolysaccharidosis I: Mucopolysaccharidosis I: management and treatment guidelines.** *Pediatrics* 2009, **123**:19–29.

doi:10.1186/s13023-014-0135-3

Cite this article as: Chuang *et al.*: A modified liquid chromatography/tandem mass spectrometry method for predominant disaccharide units of urinary glycosaminoglycans in patients with mucopolysaccharidoses. *Orphanet Journal of Rare Diseases* 2014 **9**:135.

**Submit your next manuscript to BioMed Central
and take full advantage of:**

- Convenient online submission
- Thorough peer review
- No space constraints or color figure charges
- Immediate publication on acceptance
- Inclusion in PubMed, CAS, Scopus and Google Scholar
- Research which is freely available for redistribution

Submit your manuscript at
www.biomedcentral.com/submit

